

PEDIUS EDUCATION

Real-time subtitled lessons





Pedius' services



Accessible phone calls

From the Pedius app, deaf people can make phone calls independently, 24/7.

Accessible Call Center

Deaf people can call the call centers of partner companies through the Pedius app.

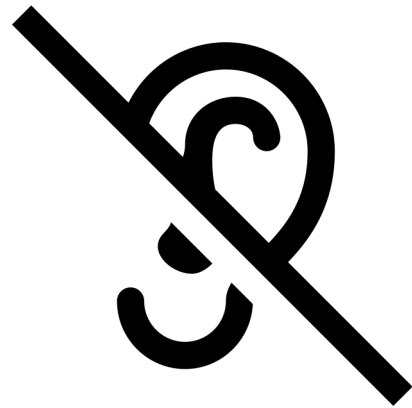


Work Inclusion

Deaf employees can make and receive phone calls and participate in conference calls for full employment inclusion.

Pedius Education: Accessibility in universities and schools

Pedius offers a way to make education equal for all students. Many students are unable to participate for reasons such as: inadequately equipped classrooms and lack of technological aids and/or communication tools.



Deaf Students

Following real-time lectures
with automatic subtitles



Students with SLD

A specific font to improve
readability and study



Foreign students

Automatic translations in
your native language





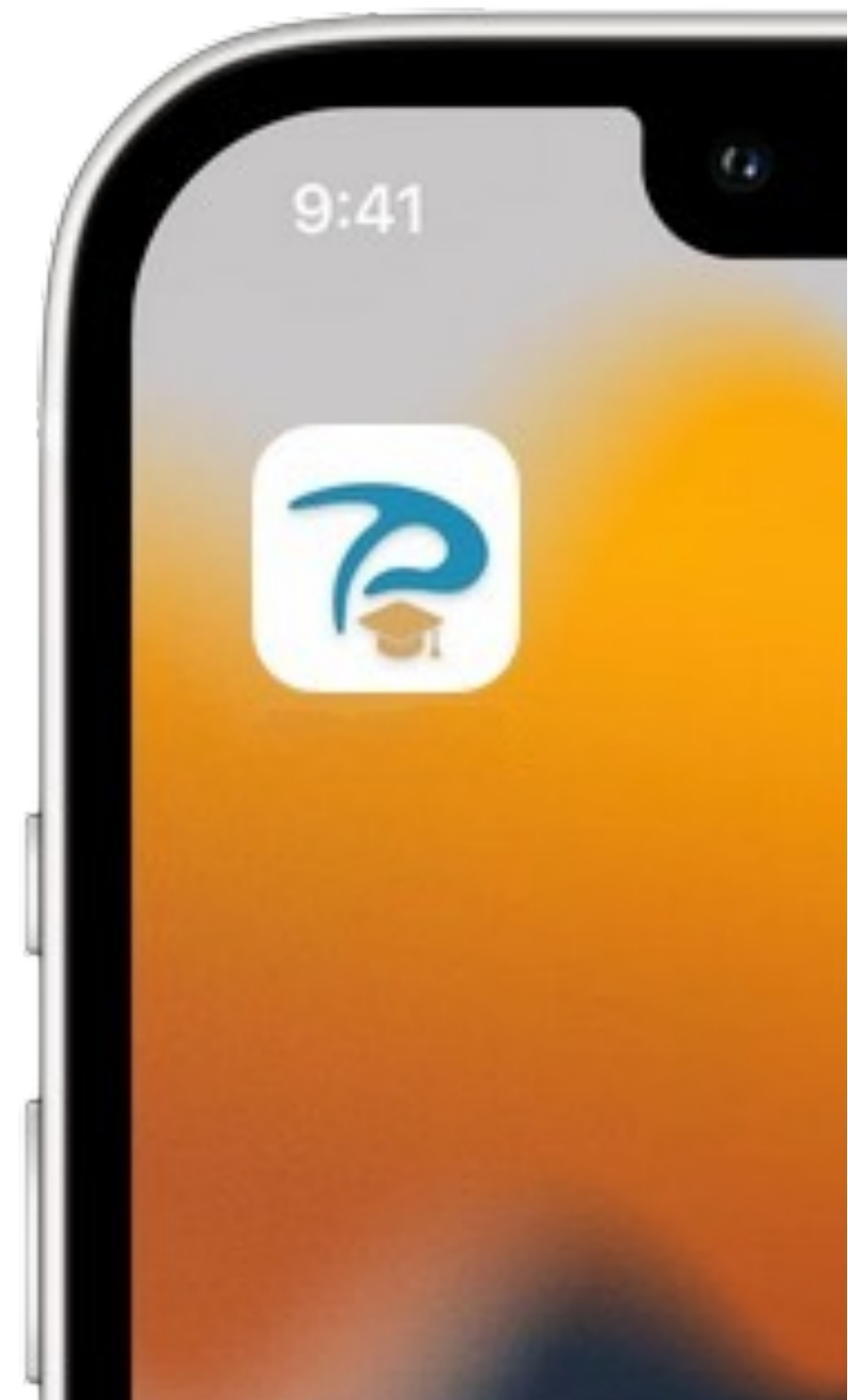
Pedius Education

Background and need

With the outbreak of the pandemic, the world education system has been faced with a challenge: to radically change the way it does schooling, how it interacts with students and teachers, but most importantly, how it interfaces with students with deafness or communication and learning difficulties.

In Italy, only 3 percent of the deaf population manages to obtain a degree, while the European average for hearing students is about 27 percent, showing that it is 9 times more difficult for a deaf student to achieve a high level of education.

Pedius proposes an innovative and technological solution that can address this problem by providing an inclusive tool for students, ensuring fair and equal access to classes.



How it works

Course Organization

At the end of the class you can view the different courses organized in folders with their transcripts

Subtitles

They will appear in real time as the lesson goes on

The discovery of the production of magnetic fields by conductors traversed by electric current is due to Ørsted in 1820

DIPARTIMENTO DI FISICA - Mario Rossi



FISICA

Il Campo Magnetico

Pausa

Termina

Microphone

The professor speaks through a bluetooth microphone that analyzes his voice in high quality

Start

The student starts the transcript of the lesson



Use case

1

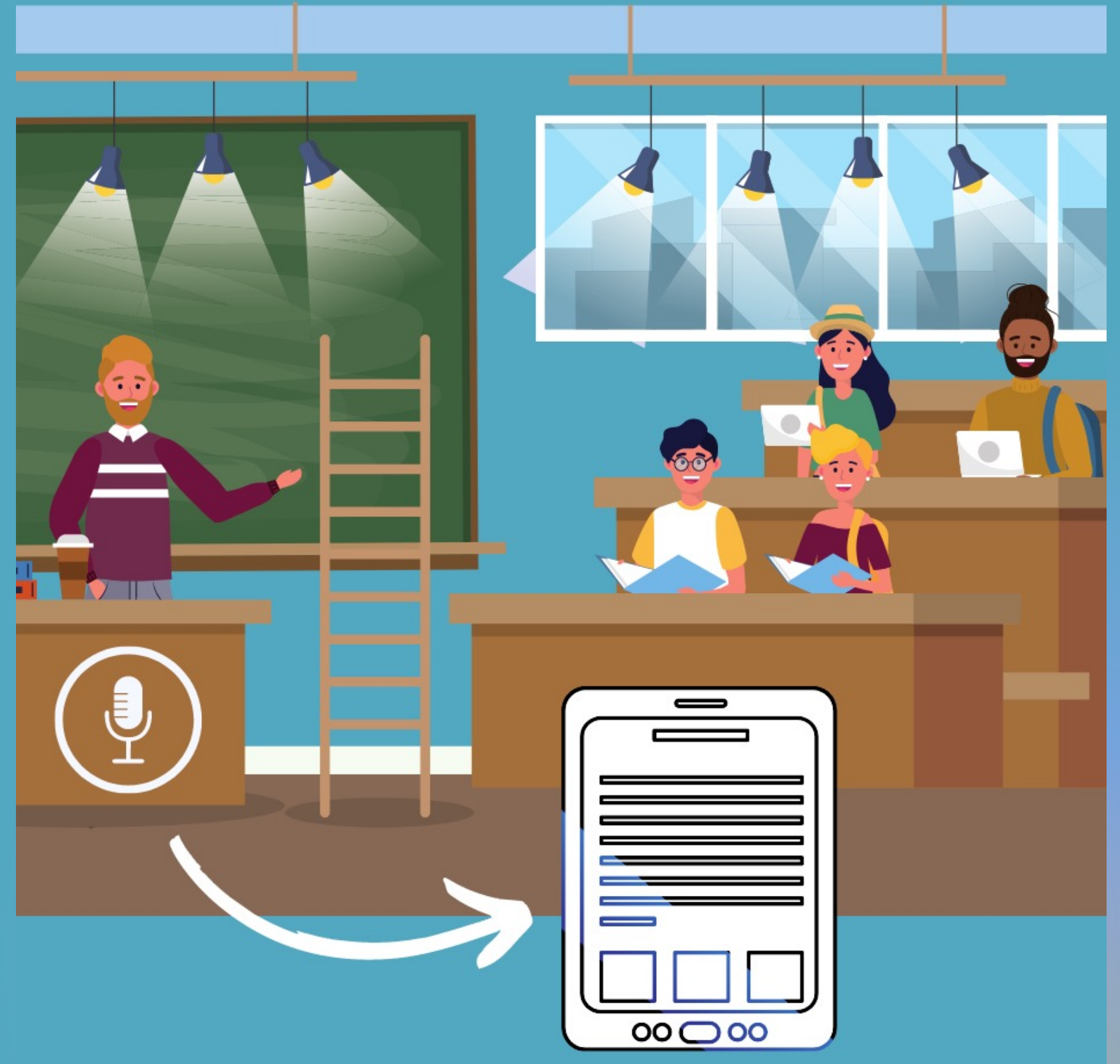
The professor receives the microphone from the student and begins the lesson. The microphone is connected to the tablet via Bluetooth technology.

2

The application in the device directly receives the audio and generates the subtitle in real time.

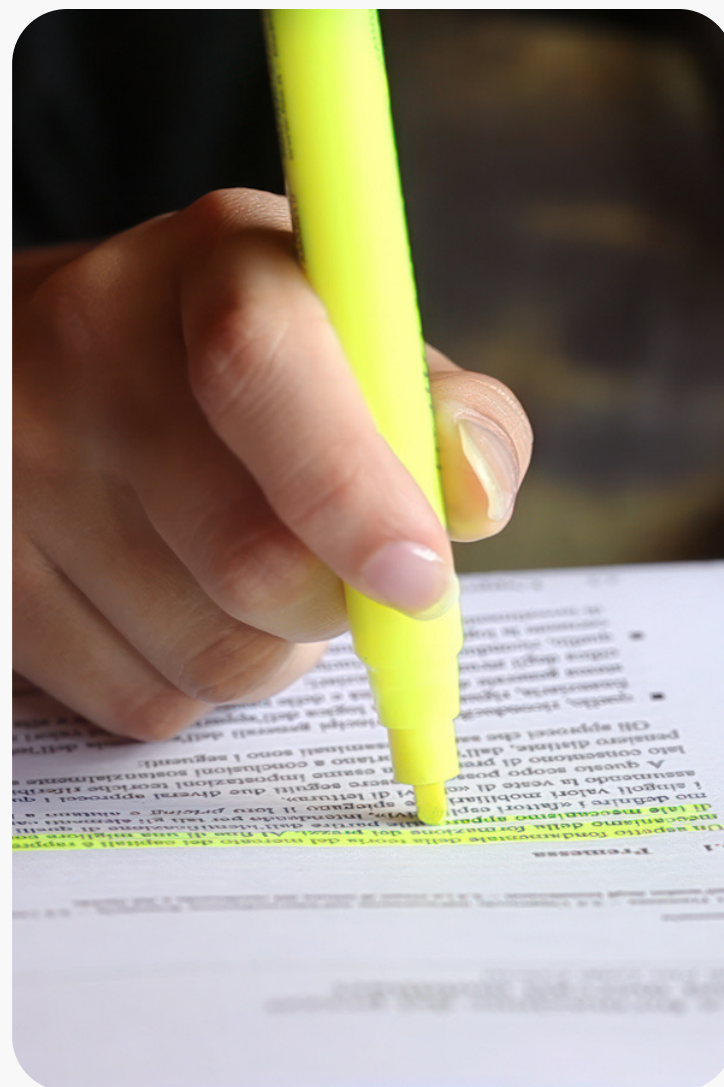
3

The student equipped with the tablet reads the subtitles of the lesson in real time.





AI for study support



Underlining automatic

Sentences considered most significant within the lesson are highlighted. The student may, during his or her study, add to or modify what is generated.

Concept maps

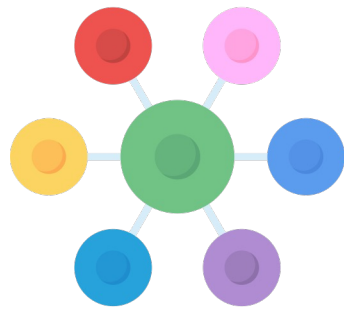
Students with SLD particularly benefit from the use of maps so that they can organize and order concepts.



Abstracts and indexing

The lesson is organized into specific sections so that specific topics can be found in the text for further study. An abstract is generated for an immediate overview.

Benefits



Concept maps, lesson indexing, automatic underlining



Subtitles in real time and usable even at a later time



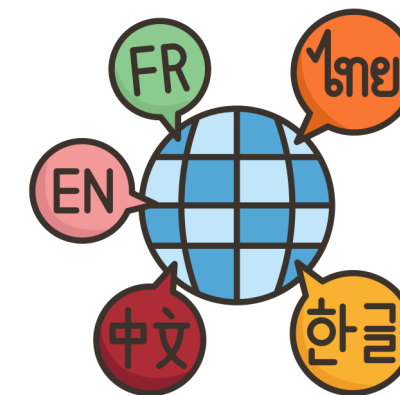
Customized dictionaries for higher quality speech recognition



Ease of use for both professor and student



Highly readable fonts for SLD students



Real-time translations into another language





Use cases

Our History

2013

The Pedius company is founded with the registration in the Register of Companies

2014

First call center accessible to Deaf people

2018

Pedius becomes an Innovative SME

2023

Pedius reaches 10 years of activity with 50,000 users, in 7 languages and 15 countries





Email Address

info@pedius.org



Our Website

www.pedius.org

